



Main Partners



Official Partners



Official Suppliers



Media Partners



Institutional Partners





Flanders 2021 – Road Races

The “Flandrien” feeling will be strong all the way through the road races of the 2021 Road World Championships in Flanders. As soon as the preliminary phase has passed, the riders of the peloton will be very eager to take the lead in one steep climb after the other. If we then add our typical Flemish cobblestones to the mix, you get a true Flemish road race, at the very highest level.

Antwerp – Leuven

The Elite Men, Elite Women and U23 men will start from the Grote Markt of Antwerp, smack in the centre of the city. The neutral start of 8 km will take us along the Scheldekaaien to the MAS and the iconic Port Authority building of Antwerp, only to dive back into the centre of the city via the Italiëlei. By the Keyserlei, we will take a left and pass through the Diamond district, along Antwerp’s Central Station and Stadspark. Back on the Frankrijklei, we will turn left again to sound the official start from the Britselei/Amerikalei in the neighbourhood of the Old Court of Justice. We will leave the city centre via the Bolivar tunnel, underneath the Palace of Justice, and the A12 and set our sights on Leuven in a straight line of 56 km (or 62 km for the U23).

After 3 km, we will leave the A12 via the Jan de Voslei and will pass through several town and city centres. The route will take in Wilrijk, Kontich, Mechelen, Bonheiden, Keerbergen and Rotselaar. In Mechelen, we get to see the magnificent Saint Rumbold’s Cathedral and the Grote Markt, among other sights. Keerbergen will act as 1 of the “Official Villages” offering plenty of fringe events for the fans of cycling in close cooperation with the municipality. After 56 kilometres for the Elite Men and Women and 62 kilometres for the U23 men, we will reach the 15.5 km local circuit in Leuven.

Local Circuit Leuven

When entering Leuven from the direction of Antwerp, riders will immediately be faced with two of the four hills that dot the local circuit, the Wijnpers and Sint-Antoniusberg. After the first two hills of the Road World Championships, it’s a slight climb up to the finish line on the Geldenaaksevest, by the Philipssite. After the Geldenaaksevest, we will turn left and take the Blijde Inkomstraat and we return to the city ring road by the station once again after two kilometres. We will immediately turn left onto the well-known Bondgenotenlaan, and just before the Saint Peter’s Church and the historic City Hall of Leuven we will turn right in the direction of the Palace of Justice. Four kilometres after passing the finish, we will start with the first of 4 short but steep hills, the Keizersberg. After a stretch along the Leuven-Dijle Canal, we go for the next climb, the Decouxlaan, straight away. After the Decouxlaan, we will return to the city centre via the Nieuwe Mechelsesteenweg, there we turn right onto the Wijnpers, the third hill on the local circuit. After the Wijnpers, we will follow the city ring road again, in the direction of the Kapucijnenvoer to then turn left. We will turn right by the Botanical Garden, in the direction of the last hill of the local circuit, the Sint-Antoniusberg. This short, steep and narrow hill, partly covered in cobblestones, is the last obstacle before the slightly uphill finish on the Geldenaaksevest.





Flandrien Circuit

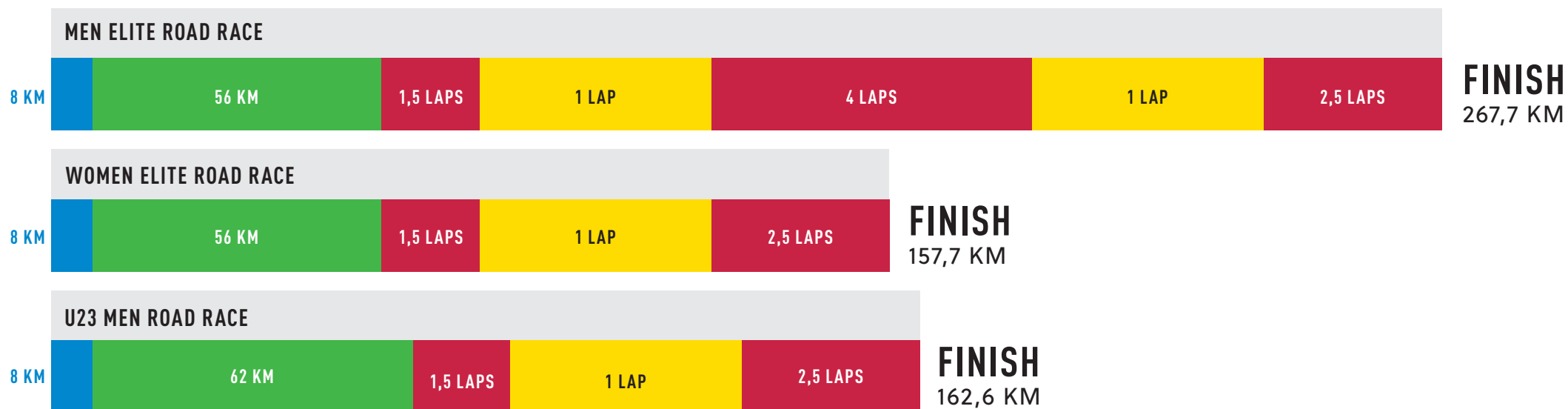
Normally, the Road World Championships' final is contested on 1 local circuit. But that's not the case for the World Championships in Flanders. To make the competition even more attractive and selective, a second local circuit in the Druivenstreek (grape region) has been added, the Flandrien Circuit. The classics riders will come into their own with 6 gruelling climbs that will follow one after the other in quick succession over the territory of the municipalities of Huldenberg, Overijse and "Official Village" Tervuren. To start with there is the famous Smeysberg in Huldenberg, followed after only 3 km by the cobblestones of the Moskesstraat. With gradients of up to 18%, this is bound to turn into the executioner of the Flandrien Circuit. After the Moskesstraat, there is a descent down into the centre of Overijse, where we will climb the well-known S-Bend in Overijse, followed by the Taymansstraat. The peloton snaking its way through the centre of Overijse will provide some wonderful aerial images. After the Taymansstraat, we will cycle in the direction of Eizer, where we will complete the last climb on Overijse's territory, the Bekestraat, another steep and narrow cobbled hill. After the Bekestraat, we will enter the territory of Tervuren, also one of the "Official Villages", where the district of Duisburg will put on lots of activities for the fans along this stretch of the Flandrien Circuit. The fifth hill is waiting after Duisburg, the Veeweidestraat. The closer of the Flandrien Circuit is a second climb of the Smeysberg, after which the riders return to Leuven for the local circuits.

On the following page, you can find an overview of the local and Flandrien circuits per category.

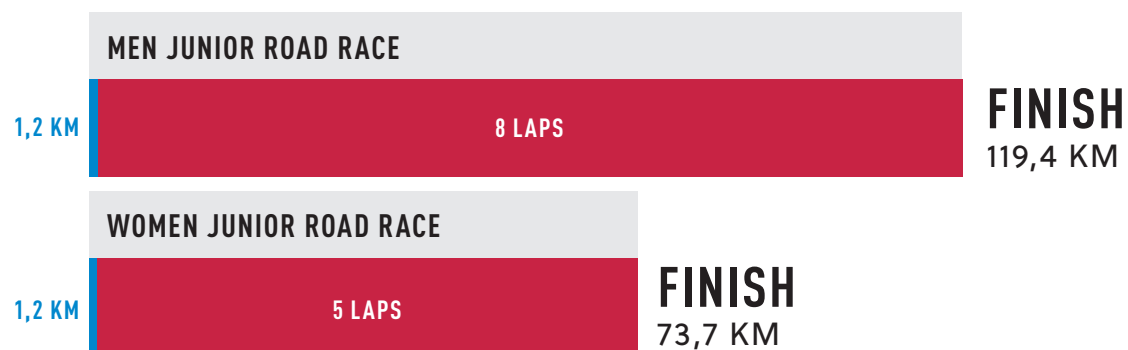




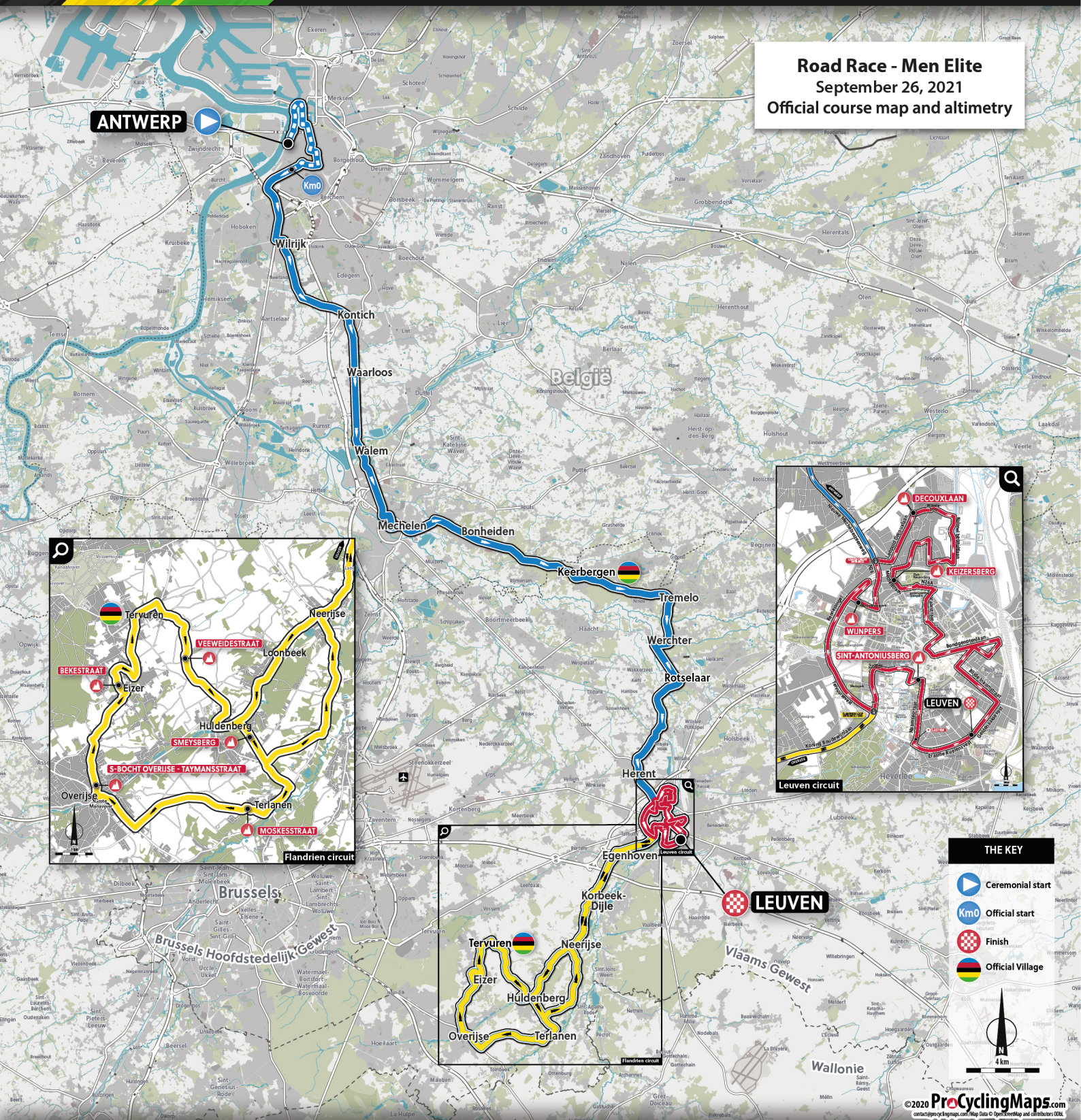
ANTWERPEN > LEUVEN



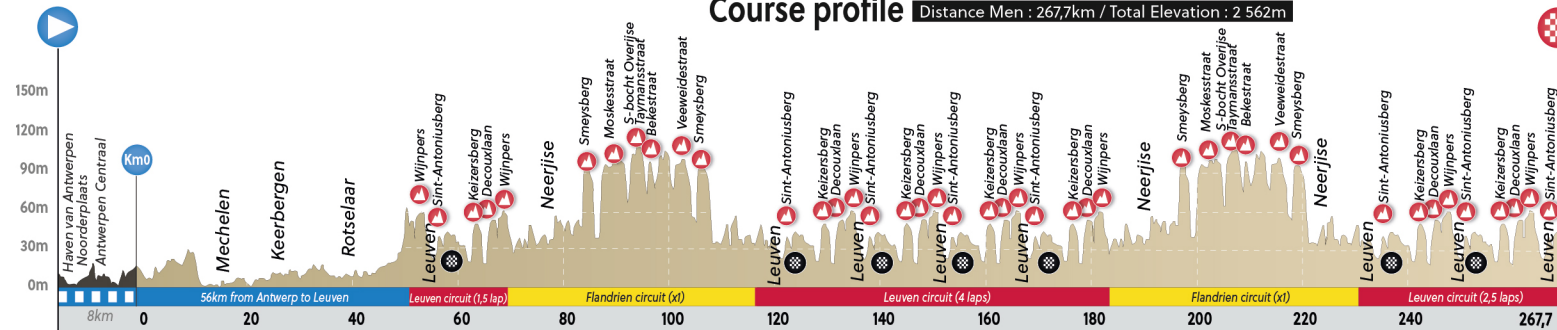
LEUVEN > LEUVEN



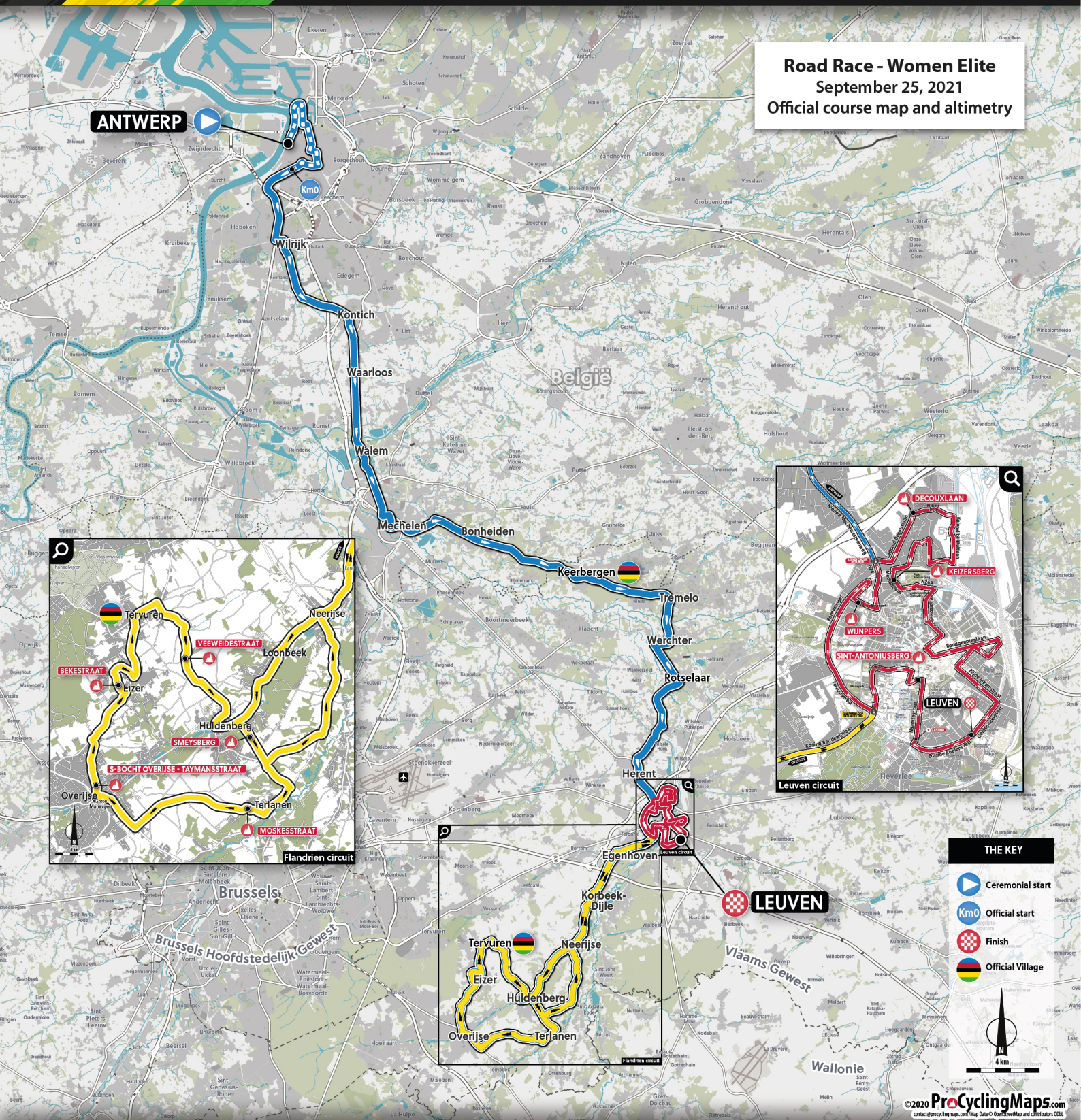
Road Race - Men Elite
September 26, 2021
Official course map and altimetry



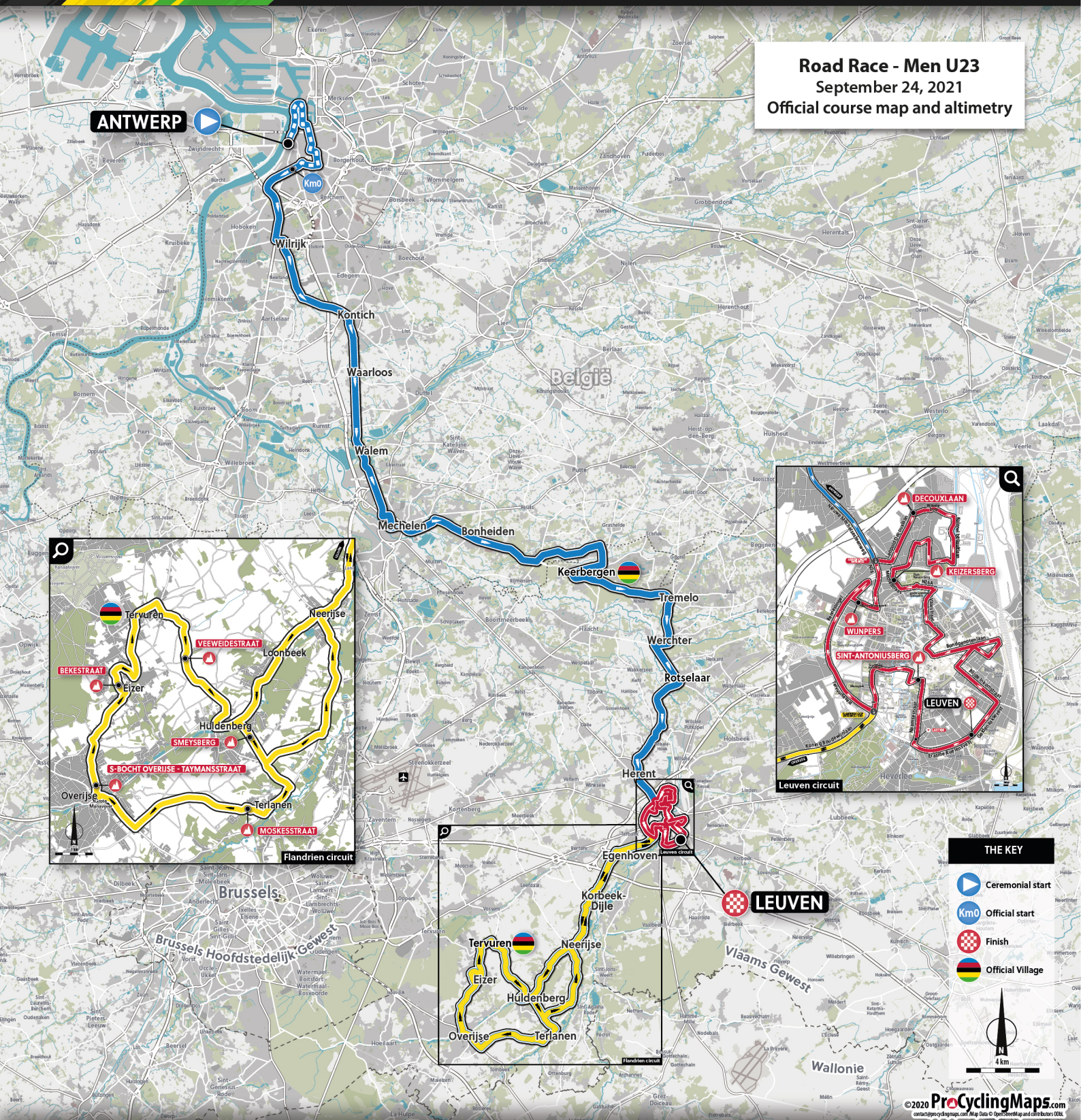
Course profile Distance Men : 267,7km / Total Elevation : 2 562m



Road Race - Women Elite
September 25, 2021
Official course map and altimetry

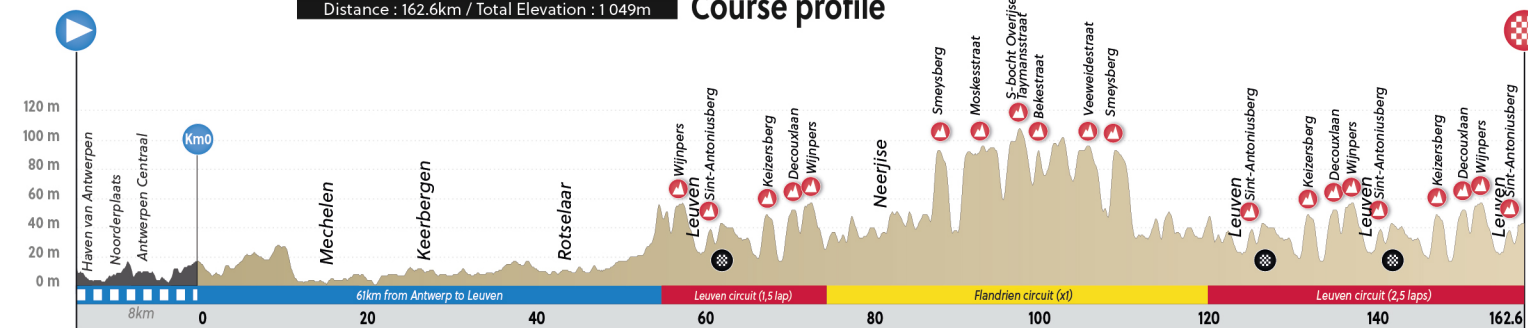


Road Race - Men U23
September 24, 2021
Official course map and altimetry

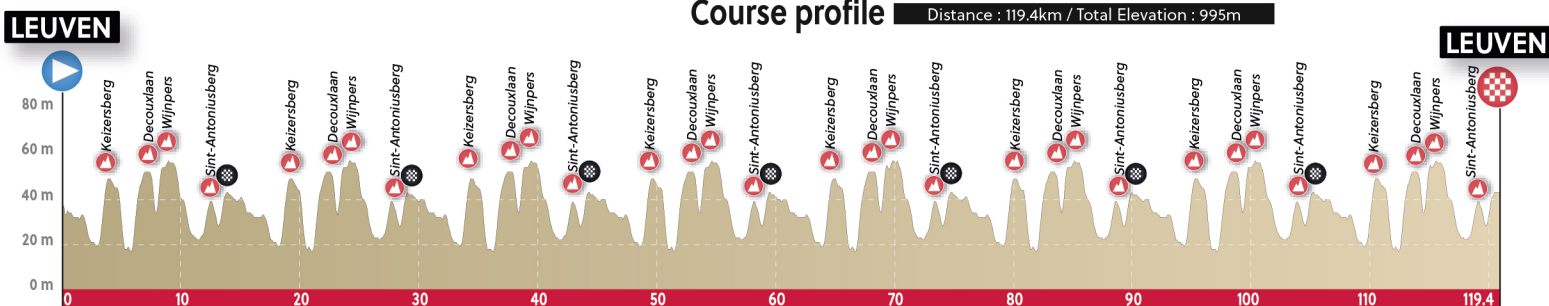
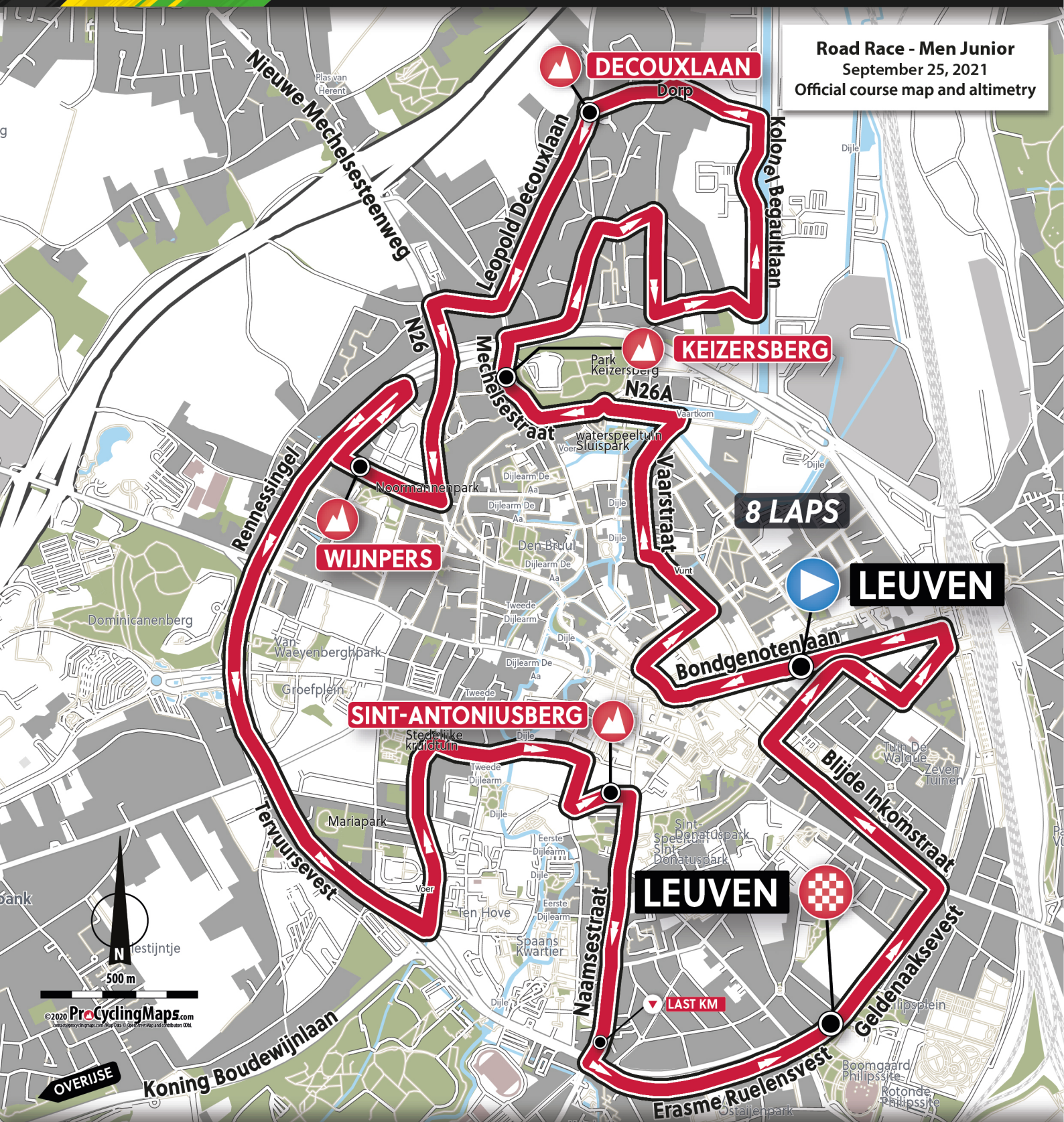


Distance : 162.6km / Total Elevation : 1 049m

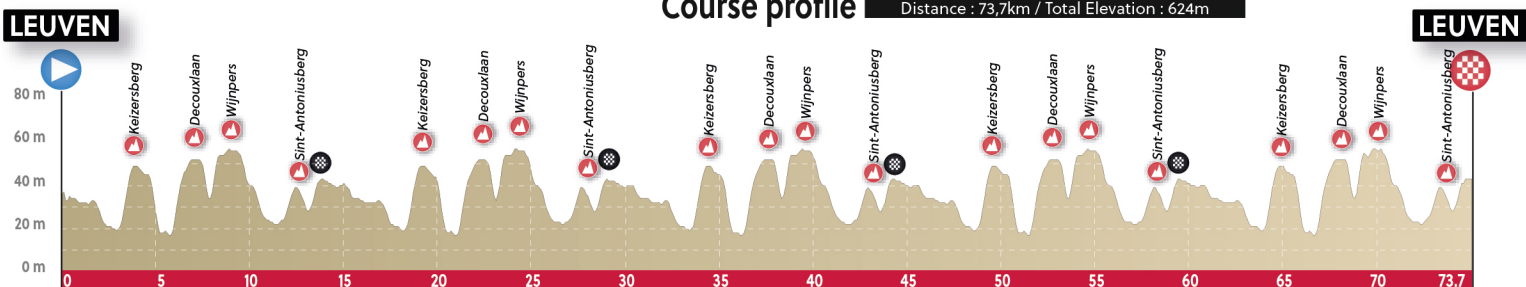
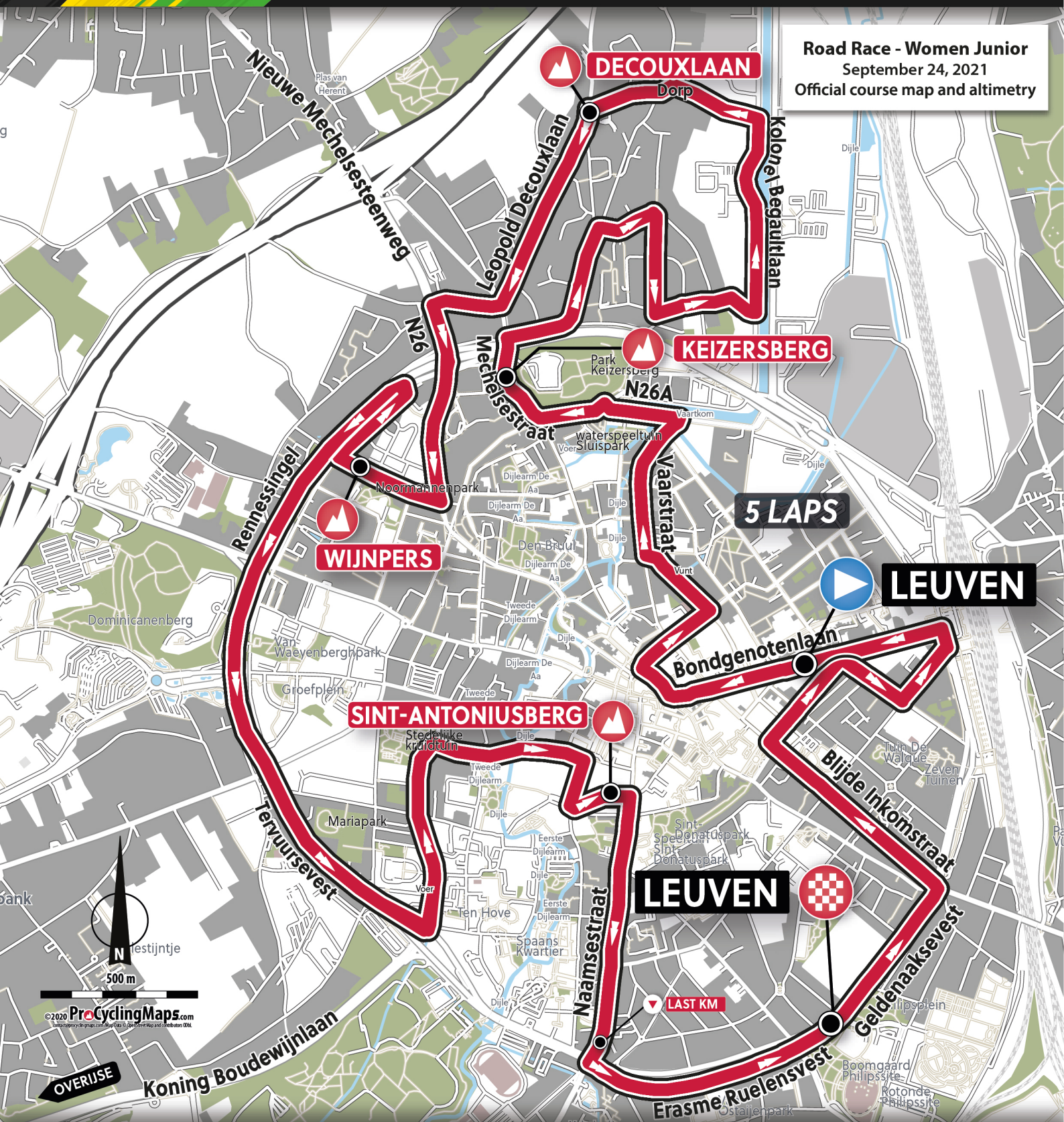
Course profile

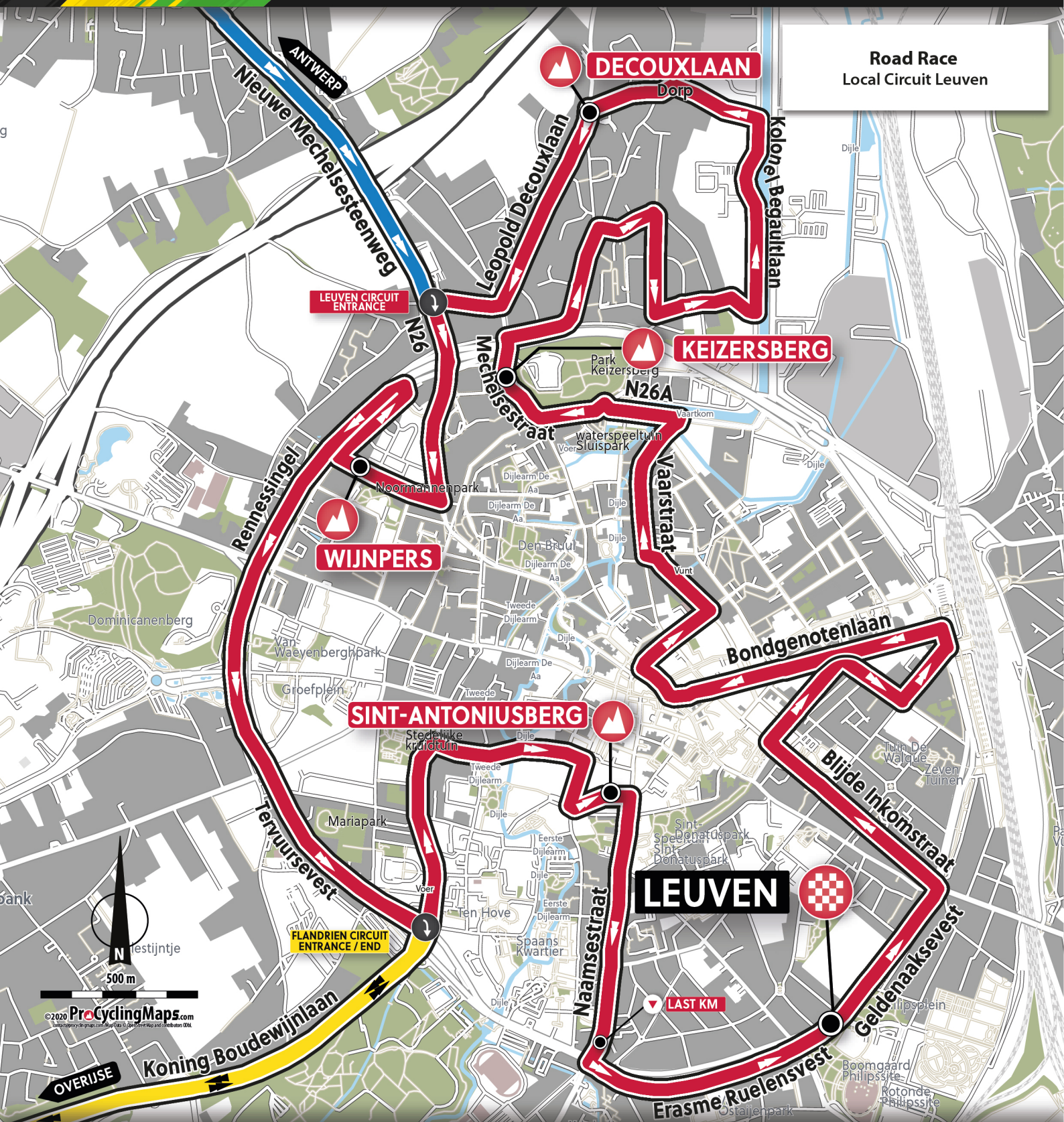


Road Race - Men Junior
September 25, 2021
Official course map and altimetry

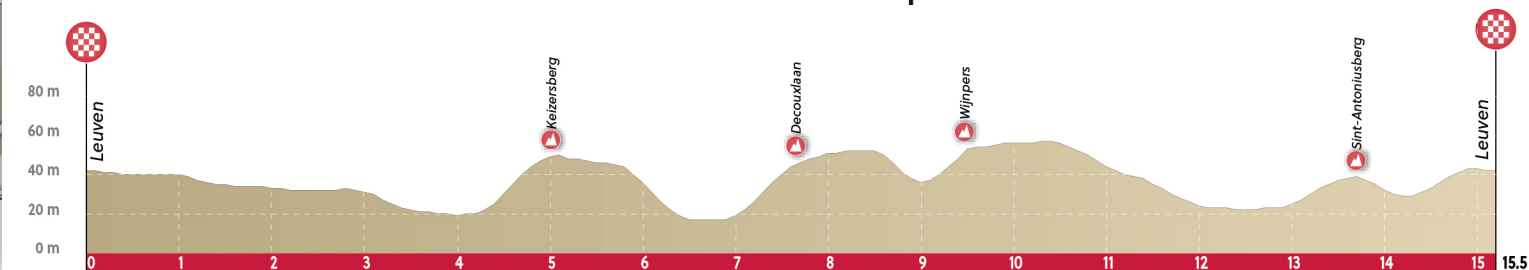


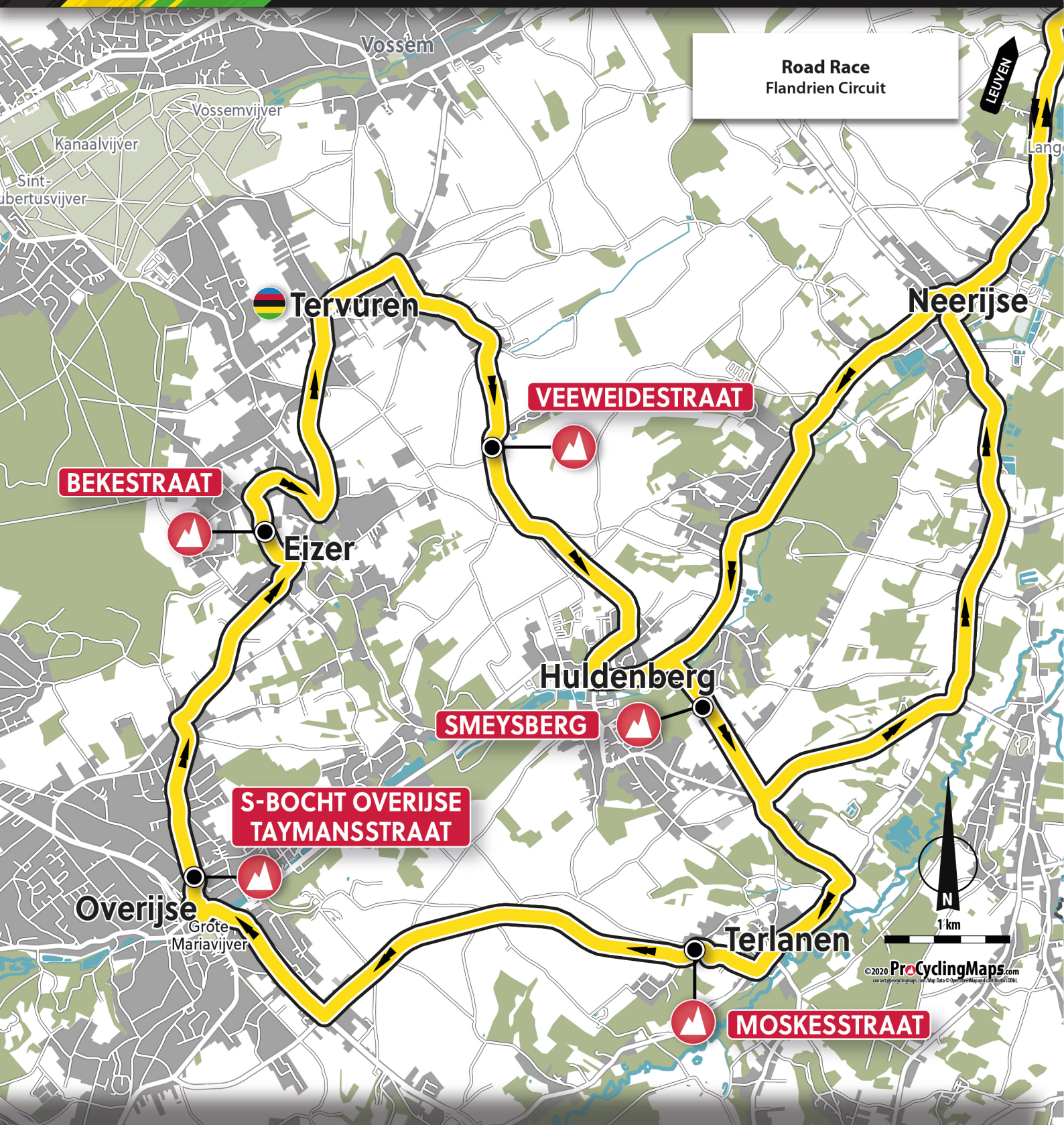
Road Race - Women Junior
September 24, 2021
Official course map and altimetry



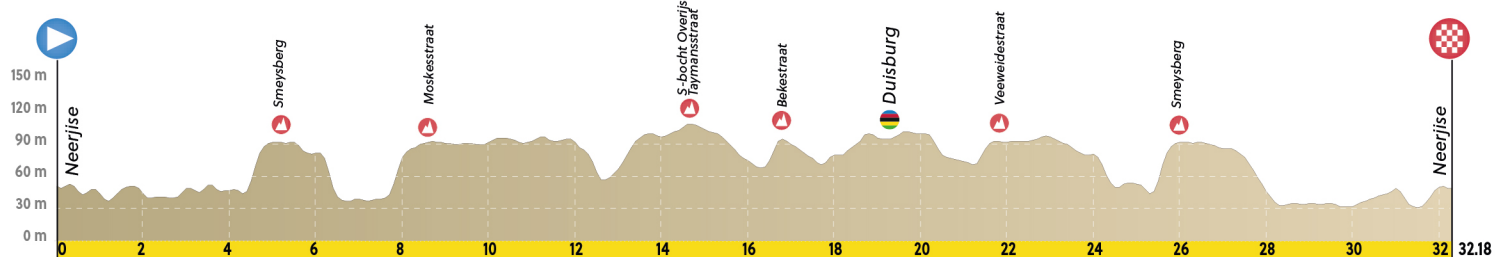


Local Circuit Leuven profile





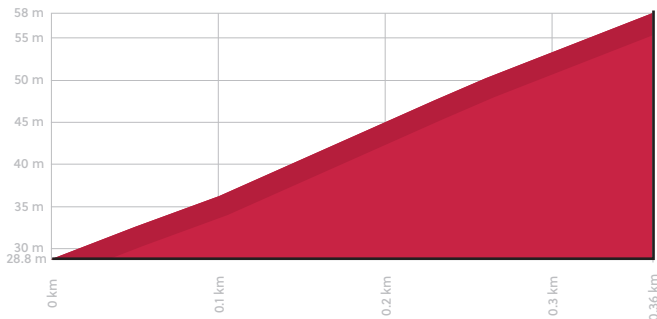
Flandrien Circuit Profile



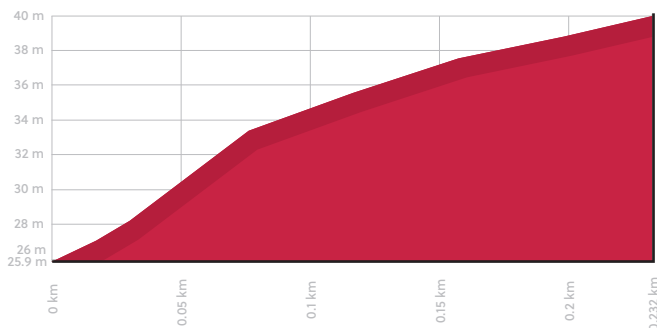


LOCAL CIRCUIT LEUVEN

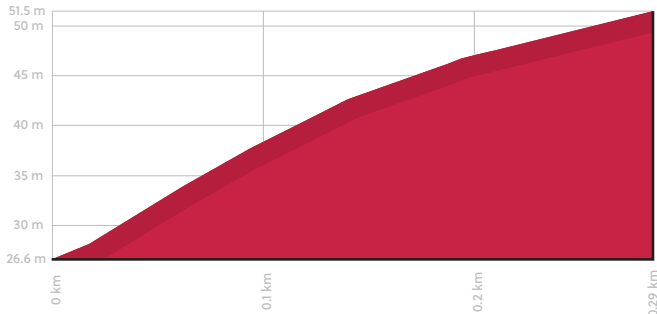
WIJNPERS / 360 M / 9% MAX / 7.98% AVG



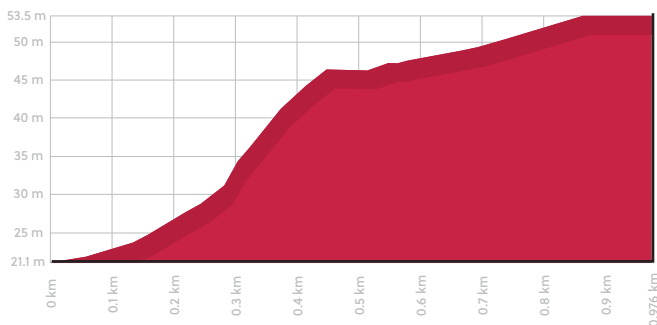
ST. ANTONIUSBERG / 230 M / 11% MAX / 5.47% AVG



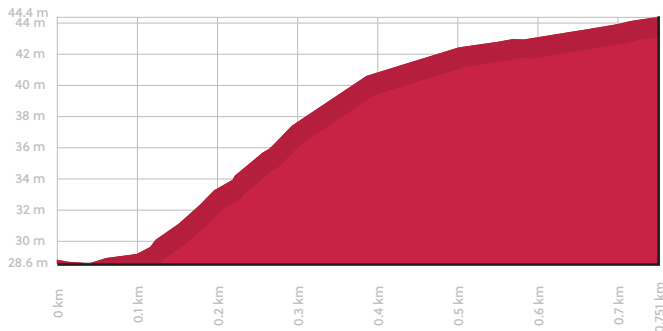
KEIZERSBERG / 290 M / 9% MAX / 6.6% AVG



DECOUXLAAN / 975 M / 14% MAX / 4.21% AVG

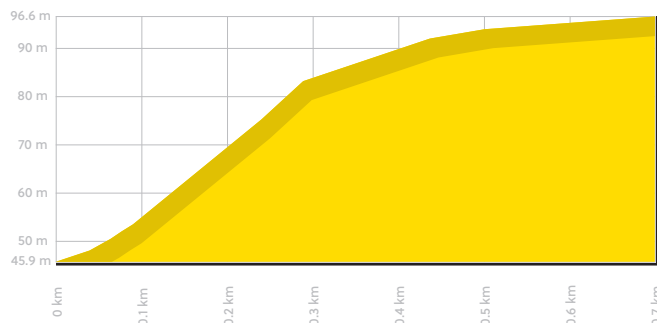


AANKOMST / 750 M / 5% MAX / 2.2% AVG

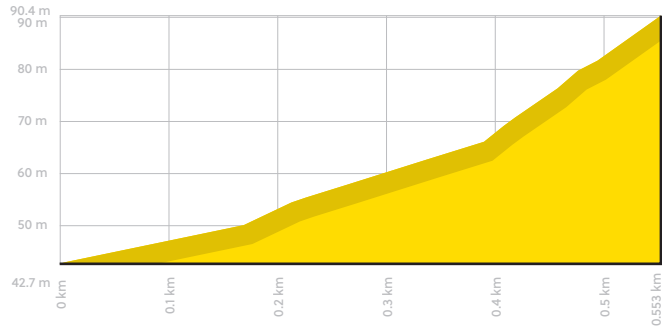


FLANDRIEN CIRCUIT

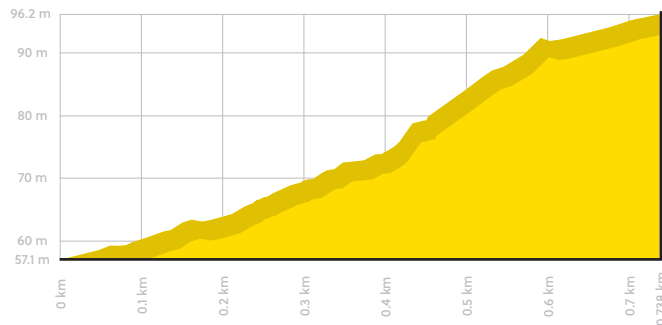
SMEYSBERG / 700 M / 16% MAX / 8.84% AVG



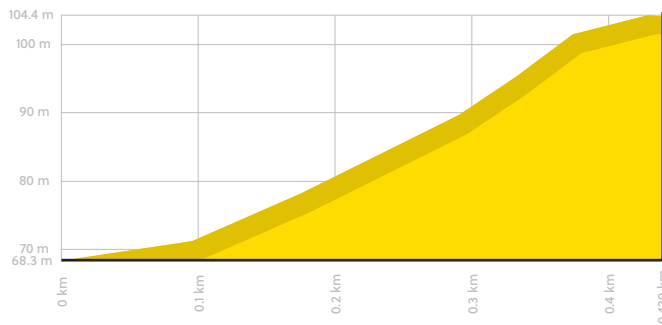
MOSKESSTRAAT / 550 M / 18% MAX / 7.98% AVG



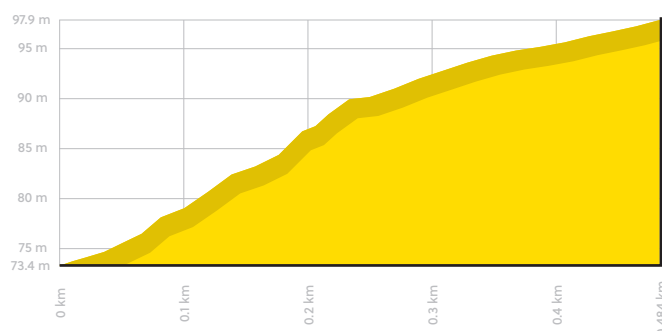
S-BOCHT OVERIJSE - TAYMANSSTRAAT / 738 M / 18.3 % MAX / 5.53% AVG



BEKESTRAAT / 439 M / 15% MAX / 7.65% AVG



VEEWEIDESTRAAT / 484 M / 12% MAX / 5.16% AVG



COMPETITION SCHEDULE**Thursday 23 September 2021****Road Races**

Road Race training - circuit only - Leuven

Friday 24 September 2021**Road Race**

Women Junior Road Race - circuit only - Leuven

Men Under 23 Road Race - Antwerp - Leuven

Saturday 25 September 2021**Road Races**

Men Junior Road Race - circuit only - Leuven

Women Elite Road Race - Antwerp - Leuven

Sunday 26 September 2021**Road Races**

Men Elite Road Race - Antwerp - Leuven